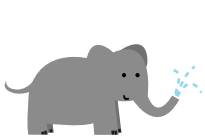


Easy as Pie

Use the pictures as clues to complete each **simile**.

A **simile** is a phrase or figure of speech that compares two things using the words **like** or **as**.



elephant



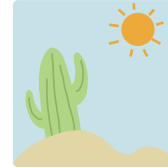
bee



bat



feather



desert



tree

I'm so thirsty, my mouth is as dry as a desert.

Without her glasses on, Judy felt as blind as a bat.

The baby kitten is as light as a feather.

I was as busy as a bee as I worked to finish my homework.

My older brother is as tall as a tree.

If my dog keeps eating so much, he'll become as big as an elephant.

Now make up your own simile!
